



M-cadherin Polyclonal Antibody

Catalog No	YP-Ab-17048
Isotype	IgG
Reactivity	Human;Mouse;Rat
Applications	WB;IHC;IF;ELISA
Gene Name	CDH15
Protein Name	Cadherin-15
Immunogen	The antiserum was produced against synthesized peptide derived from human CDH15. AA range:81-130
Specificity	M-cadherin Polyclonal Antibody detects endogenous levels of M-cadherin protein.
Formulation	Liquid in PBS containing 50% glycerol, 0.5% BSA and 0.02% sodium azide.
Source	Polyclonal, Rabbit,IgG
Purification	The antibody was affinity-purified from rabbit antiserum by affinity-chromatography using epitope-specific immunogen.
Dilution	WB: 1/500 - 1/2000. IHC: 1/100 - 1/300. ELISA: 1/10000.. IF 1:50-200
Concentration	1 mg/ml
Purity	≥90%
Storage Stability	-20°C/1 year
Synonyms	CDH15; CDH14; CDH3; Cadherin-15; Cadherin-14; Muscle cadherin; M-cadherin
Observed Band	89kD
Cell Pathway	Cell membrane; Single-pass type I membrane protein.
Tissue Specificity	Expressed in the brain and cerebellum.
Function	disease:A chromosomal aberration involving CDH15 and KIRREL3 is found in a patient with severe mental retardation and dysmorphic facial features. Translocation t(11;16)(q24.2;q24).,disease:Defects in CDH15 are the cause of mental retardation autosomal dominant type 3 (MRD3) [MIM:612580]. Mental retardation is characterized by significantly sub-average general intellectual functioning associated with impairments in adaptative behavior and manifested during the developmental period.,function:Cadherins are calcium dependent cell adhesion proteins. They preferentially interact with themselves in a homophilic manner in connecting cells; cadherins may thus contribute to the sorting of heterogeneous cell types. M-cadherin is part of the myogenic program and may provide a trigger for terminal muscle differentiation.,similarity:Contains 5 cadherin domains.,tissue specificity:Expressed in the brai
Background	This gene is a member of the cadherin superfamily of genes, encoding calcium-dependent intercellular adhesion glycoproteins. Cadherins consist of an



extracellular domain containing 5 cadherin domains, a transmembrane region, and a conserved cytoplasmic domain. Transcripts from this particular cadherin are expressed in myoblasts and upregulated in myotubule-forming cells. The protein is thought to be essential for the control of morphogenetic processes, specifically myogenesis, and may provide a trigger for terminal muscle cell differentiation. [provided by RefSeq, Jul 2008],

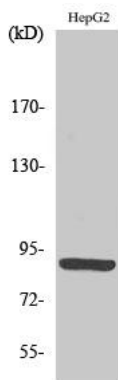
matters needing attention

Avoid repeated freezing and thawing!

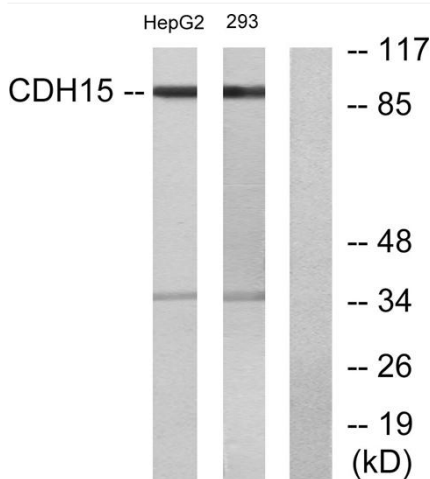
Usage suggestions

This product can be used in immunological reaction related experiments. For more information, please consult technical personnel.

Products Images



Western Blot analysis of various cells using M-cadherin Polyclonal Antibody diluted at 1:500



Western blot analysis of lysates from HepG2 and 293 cells, using CDH15 Antibody. The lane on the right is blocked with the synthesized peptide.